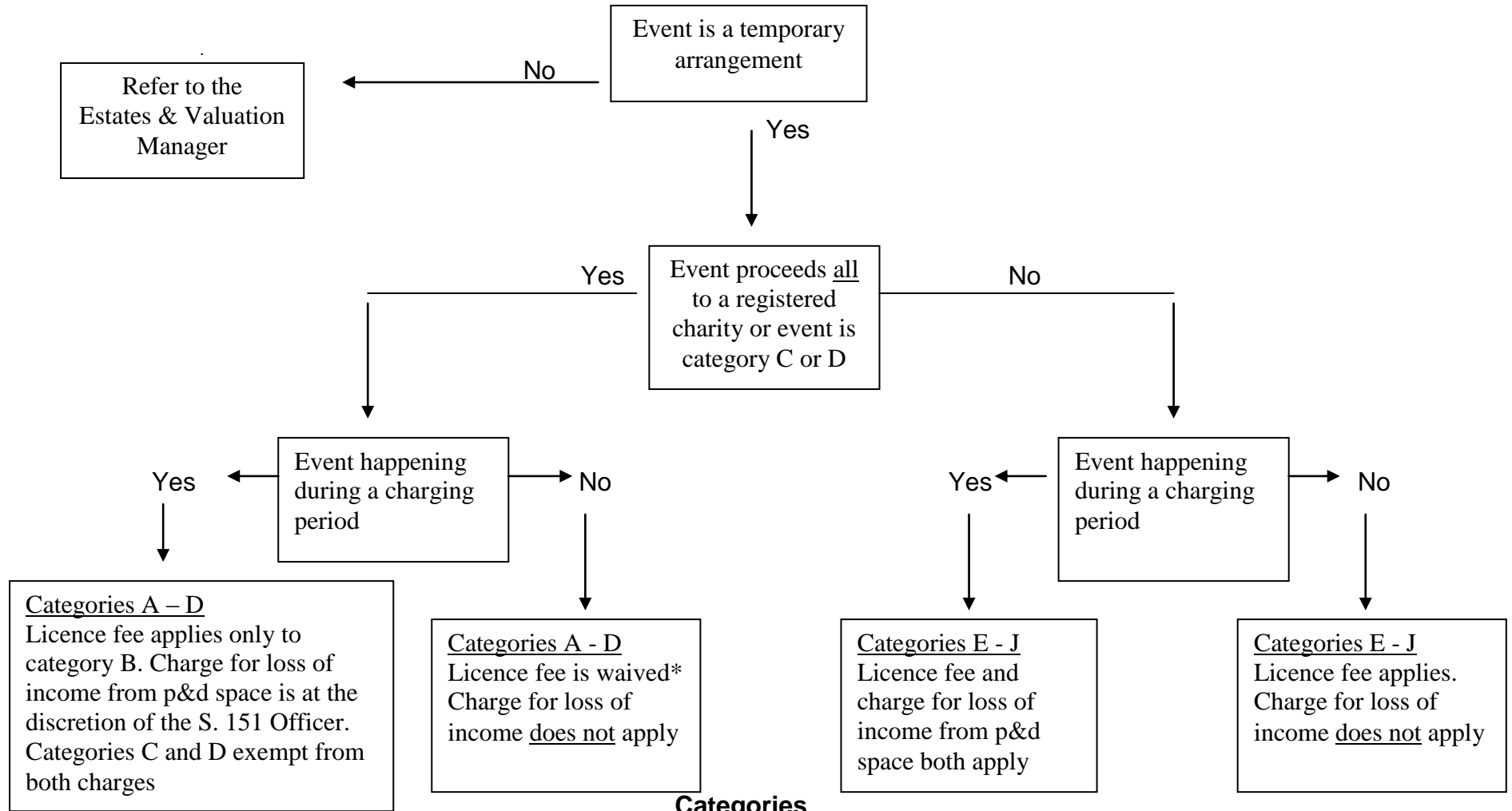


LICENCE FOR USE OF CAR PARK – FEES AND CHARGES



Categories

- | | |
|---|---|
| <p>A Fundraising, non profit making – small scale event - (less than 7 parking bays)</p> <p>B Fundraising, non profit making – large scale event (more than 7 parking bays)</p> <p>C Health Awareness</p> <p>D Safety Awareness</p> | <p>E Tourism and leisure</p> <p>F Commercial enterprise</p> <p>G Resident - property access</p> <p>H Business – property access</p> <p>I Wayleave</p> <p>J Utilities / compounds or essential works</p> |
|---|---|

* fee waived only in exceptional circumstances